

## CONDITION REPORT

## 2013 BMW X3 XDRIVE 28I

**Consignor:** BMW FINANCIAL SERVICES  
**Location:** Dallas Lane H  
**Promotion:**

Start Date: Aug 27,  
2015

**Run #267** Start Time: 10:30 AM  
EST

**Lane #H** Current Time: 08:53 AM  
EST

VEHICLE INFORMATION		ANNOUNCEMENTS	
<b>VIN:</b>	5UXWX9C58D0A12356	<b>Stock # :</b>	194774
<b>Engine:</b>	4 Cylinder Gas [4G]	<b>Ext. Color:</b>	Carbon Black Metalli
<b>Transmission:</b>	Automatic Transmission	<b>Int. Color:</b>	Oyster Nevada Leathe
<b>Body Style:</b>		<b>Int. Type:</b>	LEATHER
<b>Odometer:</b>	63,955 MI	<b>Title State/Prov:</b>	TX
<b>In Service Date:</b>		<b>Manufacturer's Pkg:</b>	
<b>Grade</b>	2		
		CC CONV PKG DSC HDC M SPT PKG NAV OBC PDC PREM PKG TECH PKG WT	
OPTIONS		REMARKS	
ACI - Independent Climate Control		Remote Entry	
CC - Cruise Control		Books Partial	
PL - Power Lock		Wheel Type Factory	
4G - 4 Cylinder Gas [4G]		No Yes	
PSDP - Seat - Power Driver and Passenger		Headlight Type Xenon	
PW - Power Window		Yes Yes	
LEATHER - LEATHER		Driveable No	
PST - Power Steering		Direct. Stab. Cntrl	
AFCD - AMFMCD			
PN - Panoramic Roof			
AT - Automatic Transmission			
ACCESSORIES		<p><b>MANDATORY PSI NOTICE FOR BMW FINANCIAL SERVICES UNITS PURCHASED THROUGH LIVEBLOCK</b>  All BMW Financial Services units, purchased through LiveBlock, receive a mandatory post sale inspection (PSI). The PSI fee will be added to your buy fee. The following units are excluded: Alphaera (off-make units), Mini Coopers, motorcycles, AS-IS units, units \$50,000+ in price, and units 10+ years old.</p>	
2.0L 4CYL GASOLINE FUEL			
Drive Train - All Wheel			
Navigational System			
HILL DESCENT CONTROL			
POWER MIRRORS			
PREMIUM PACKAGE			
Rain Sensored Windshield			
SPORTS PKG			

**WHEELS AND TIRES**

Front Left Tire, Tread Depth: 6/32", Tire Brand Goodyear, Wheel Diameter: 19 inches, Tire Size:

Front Right Tire, Tread Depth: 5/32", Tire Brand Goodyear, Wheel Diameter: 19 inches, Tire Size:

Rear Left Tire, Tread Depth: 3/32", Tire Brand Goodyear, Wheel Diameter: 19 inches, Tire Size:

Rear Right Tire, Tread Depth: 1/32", Tire Brand Goodyear, Wheel Diameter: 19 inches, Tire Size:

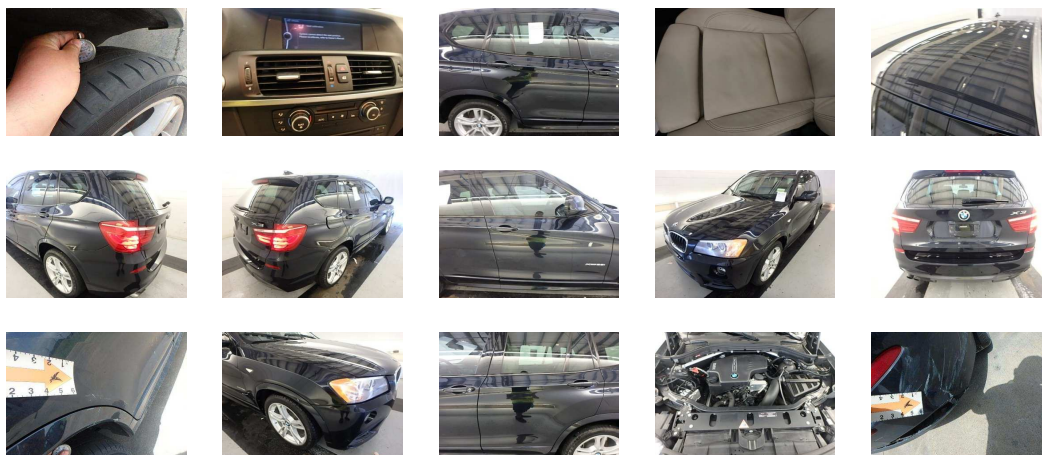
Spare Tire, Wheel Diameter: , Tire Size:

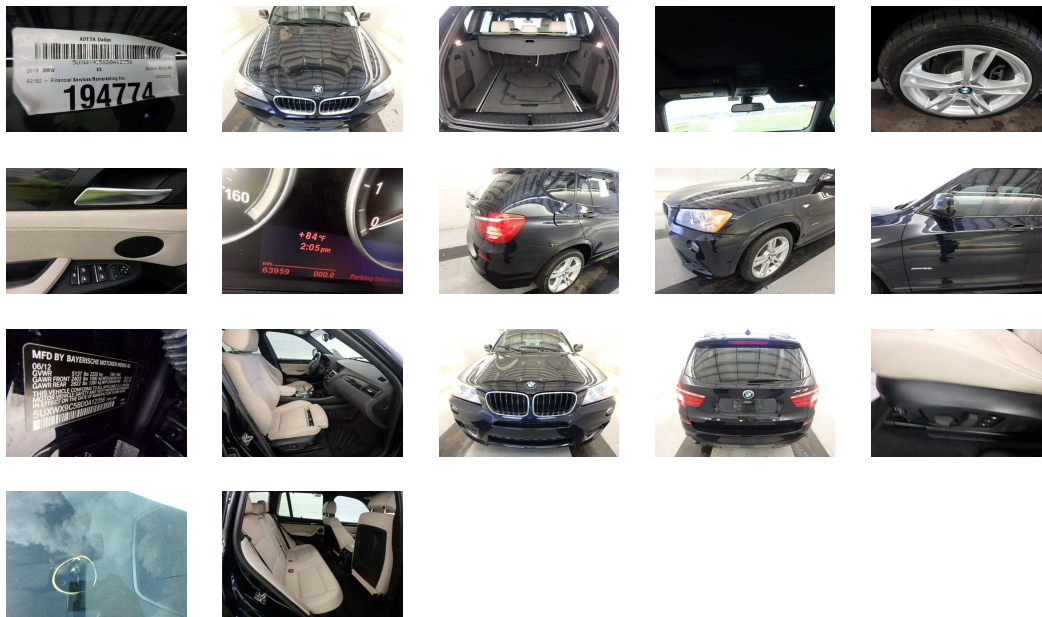
**ADDITIONAL INFORMATION**

**Exterior Information**

**Interior Information**

INT OPT Master Key Missing Replace  
 FRONT Bumper Cover Scratched-Multiple 1 - 2 inches (Repair)  
 FRONT Hood Dents - Multiple 2 - 3 inches (PDR)  
 L FEND Panel Dents - Multiple 2 - 3 inches (Repair)  
 LF DR Panel Chips-Multiple Repair  
 LF DR Panel Ding < 1 inch (Repair)  
 LR DR Panel Dings - Multiple < 1 inch (PDR)  
 L QTR Panel Dents - Multiple 1 - 2 inches (Estimate)  
 L QTR Panel Scratched < 1 inch (Repair)  
 R QTR Molding Scratched 1 - 2 inches (Estimate)  
 RR DR Panel Scratched - Multiple 12+ inches (Estimate)  
 RR DR Panel Dent 5 - 6 inches (Repair)  
 RF DR Panel Scratched - Multiple 1 - 2 inches (Repair)  
 RF DR Panel Dent < 1 inch (Repair)  
 R FEND Panel Scratched < 1 inch (Repair)  
 L FEND 19 Scratched 12+ inches (Repair)  
 L QTR 19 Worn Replace  
 L QTR 19 Scratched 12+ inches (Estimate)  
 R QTR 19 Worn Replace  
 R FEND 19 Scratched 12+ inches (Repair)  
 REPAIRED: FRONT Bumper Cover Dent 6 - 12 inches (Repair)  
 REPAIRED: REAR Bumper Cover Collision 12+ inches (Replace)  
 REPAIRED: FRONT Windshield Non Standard Star Replace





Copyright © 2015 ADESA | All Rights Reserved